

PV COMPUTER GRAPHICS

PV COMPUTER GRAPHICS

PV COMPUTER GRAPHICS

PV COMPUTER GRAPHICS

PV COMPUTER GRAPHICS

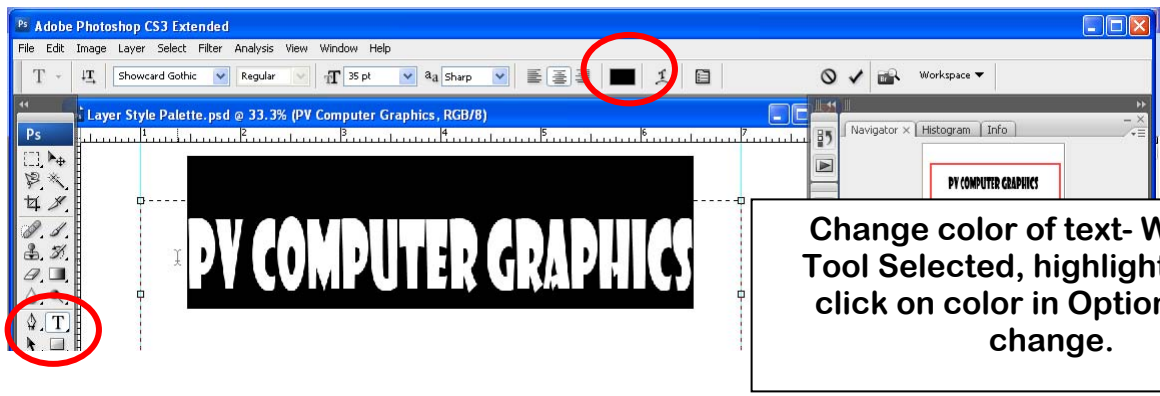
PV COMPUTER GRAPHICS

PV COMPUTER GRAPHICS

PV COMPUTER GRAPHICS

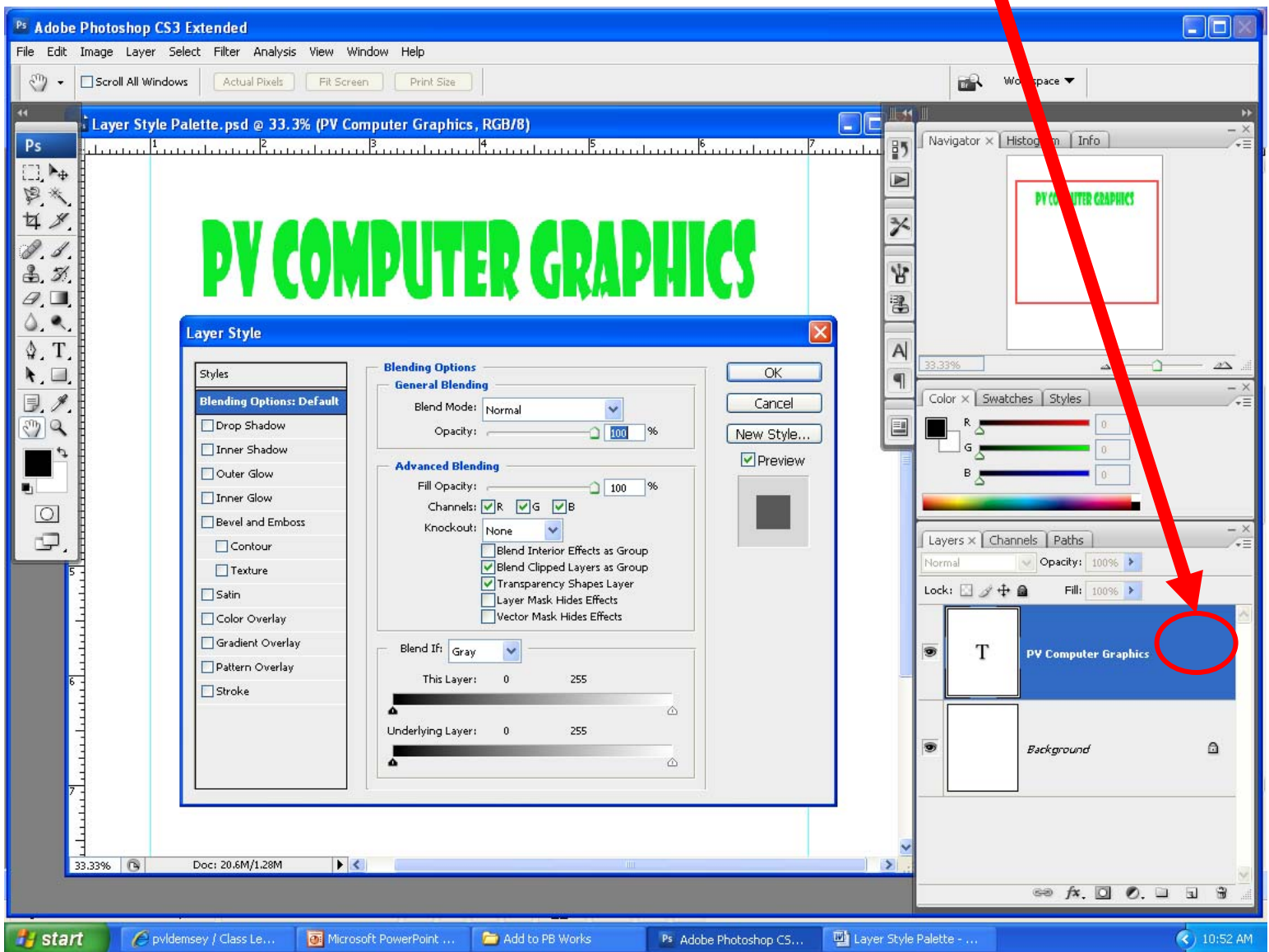
Pick a font, duplicate 7 times and add the various layer styles to your text.

Save as Layer Style in your student folder.



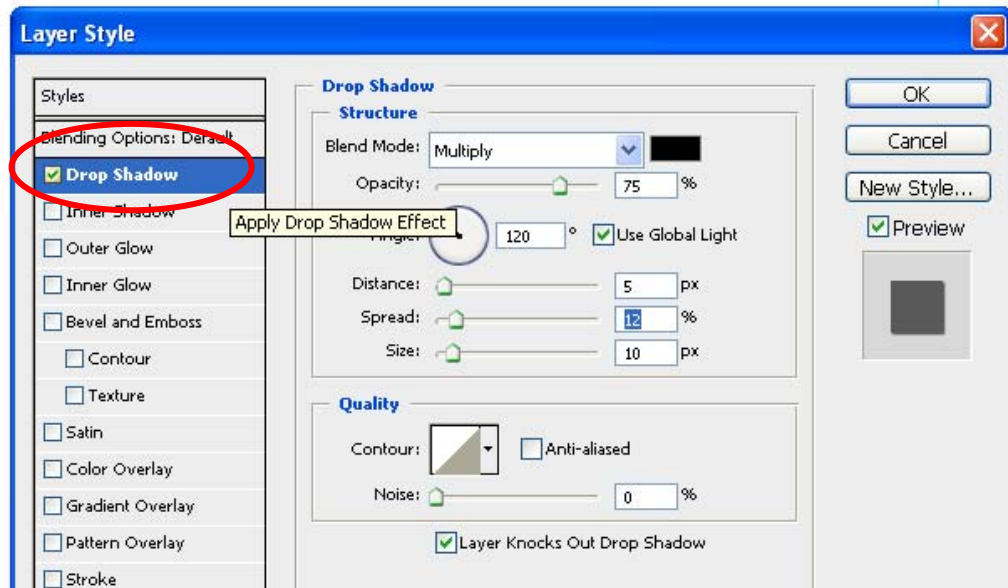
Change color of text- With Type Tool Selected, highlight text and click on color in Options bar to change.

Double click on the layer in the layers palette to bring up Layer Style

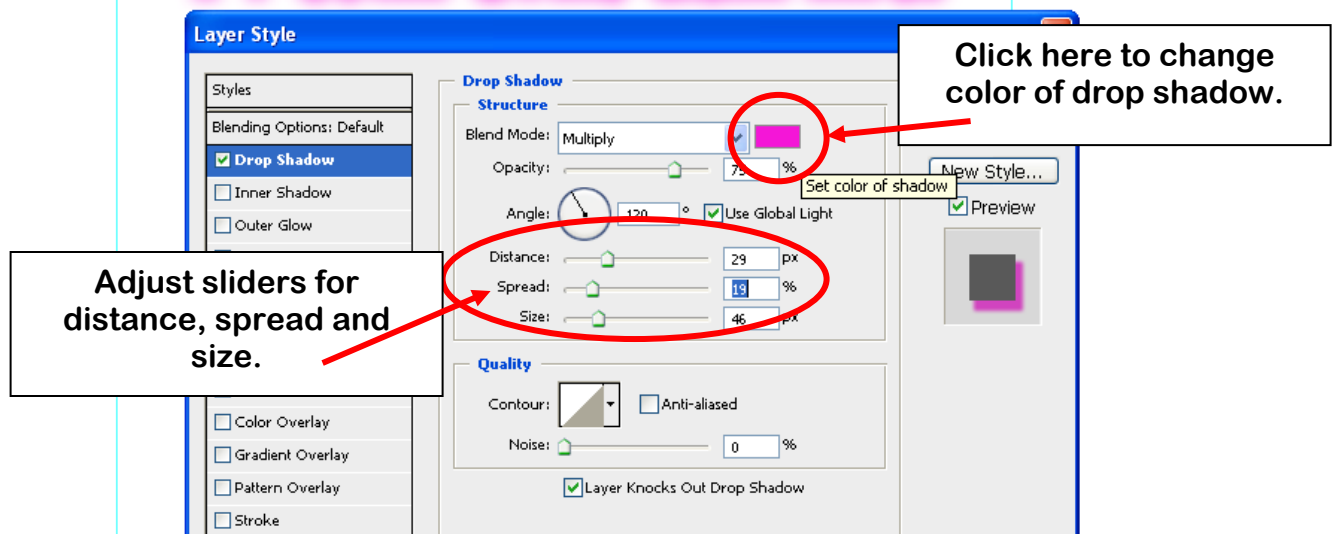


Drop Shadow - Size and color can be changed

PV COMPUTER GRAPHICS

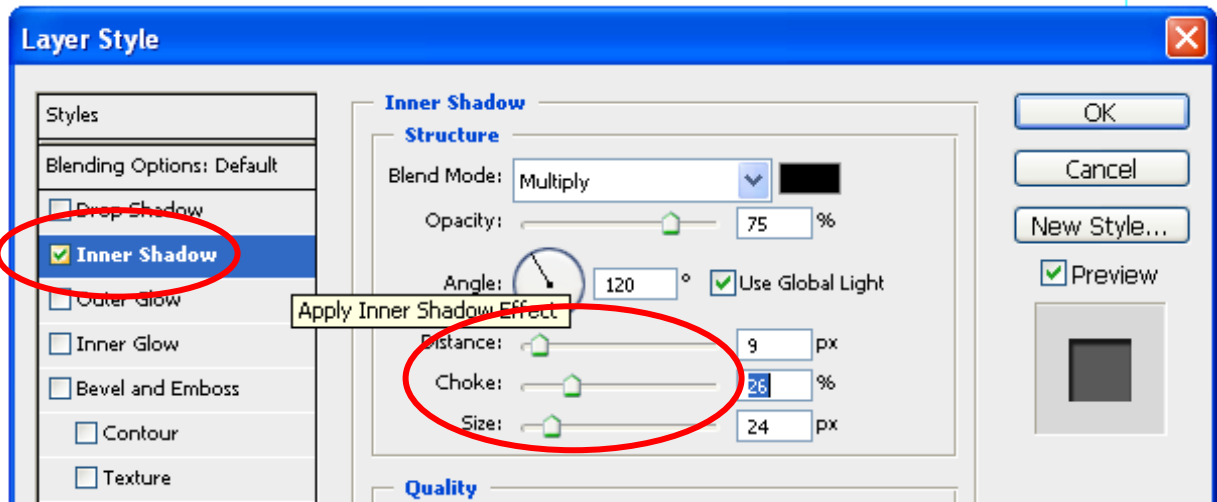


PV COMPUTER GRAPHICS



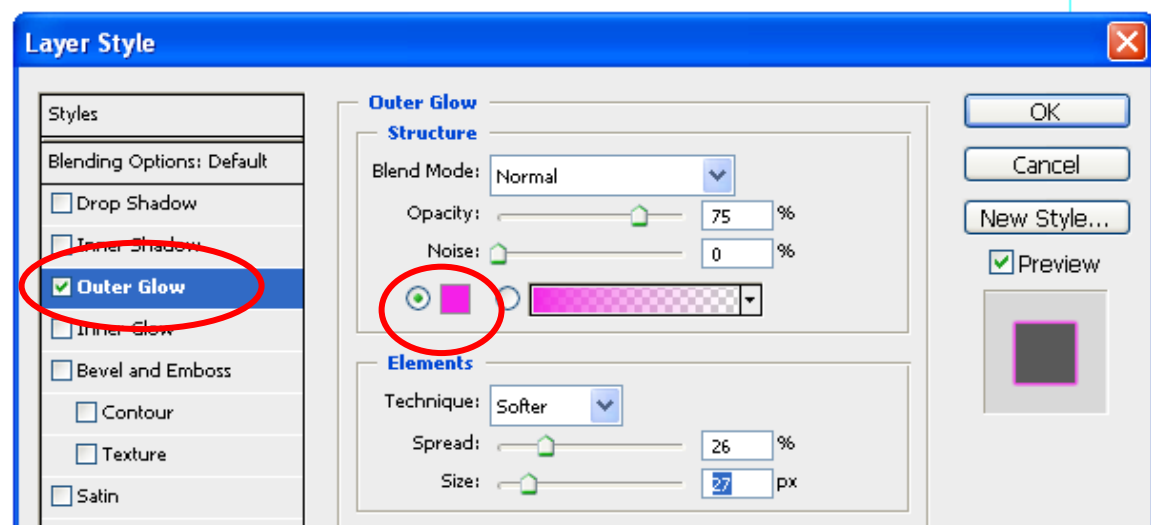
Inner Shadow - Distance and size can be changed

PV COMPUTER GRAPHICS

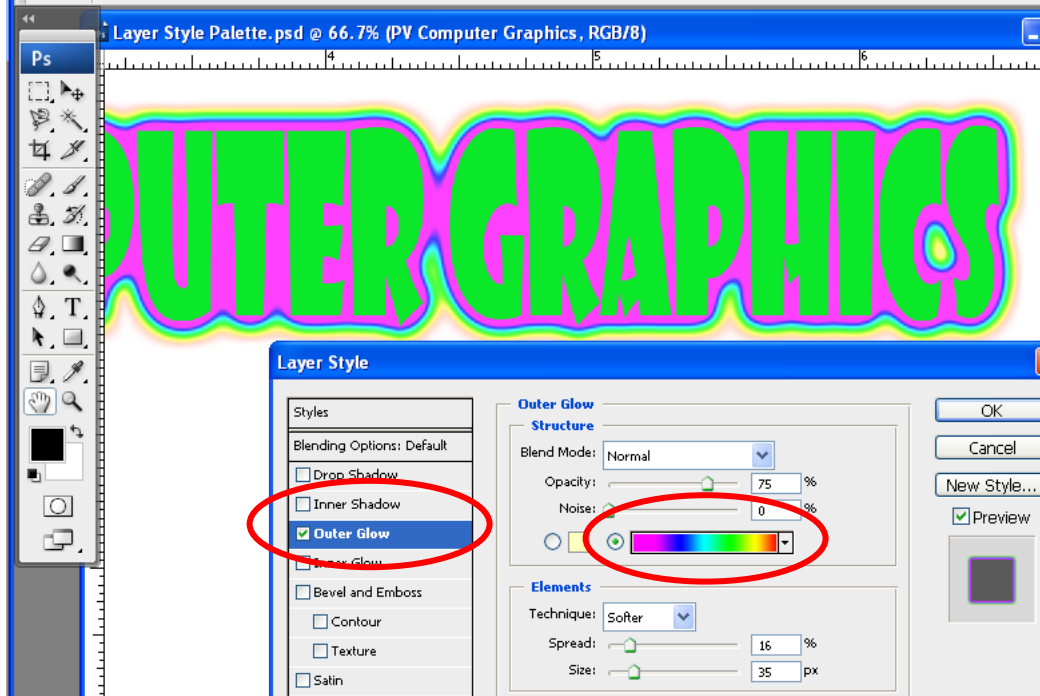


Outer Glow - Add a color

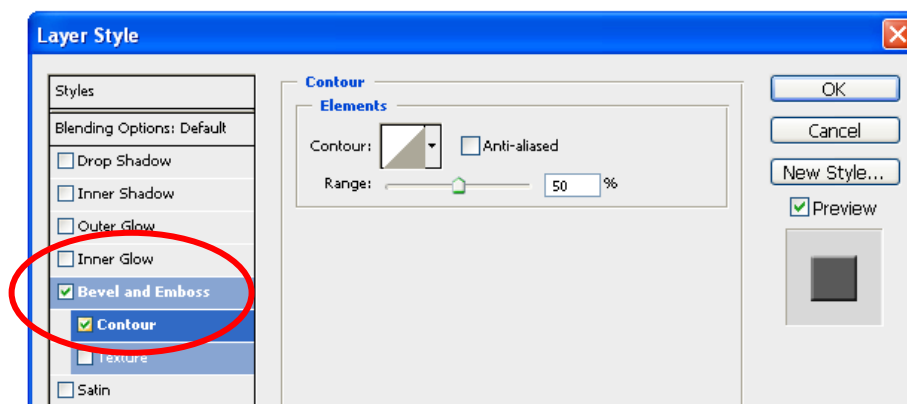
PV COMPUTER GRAPHICS



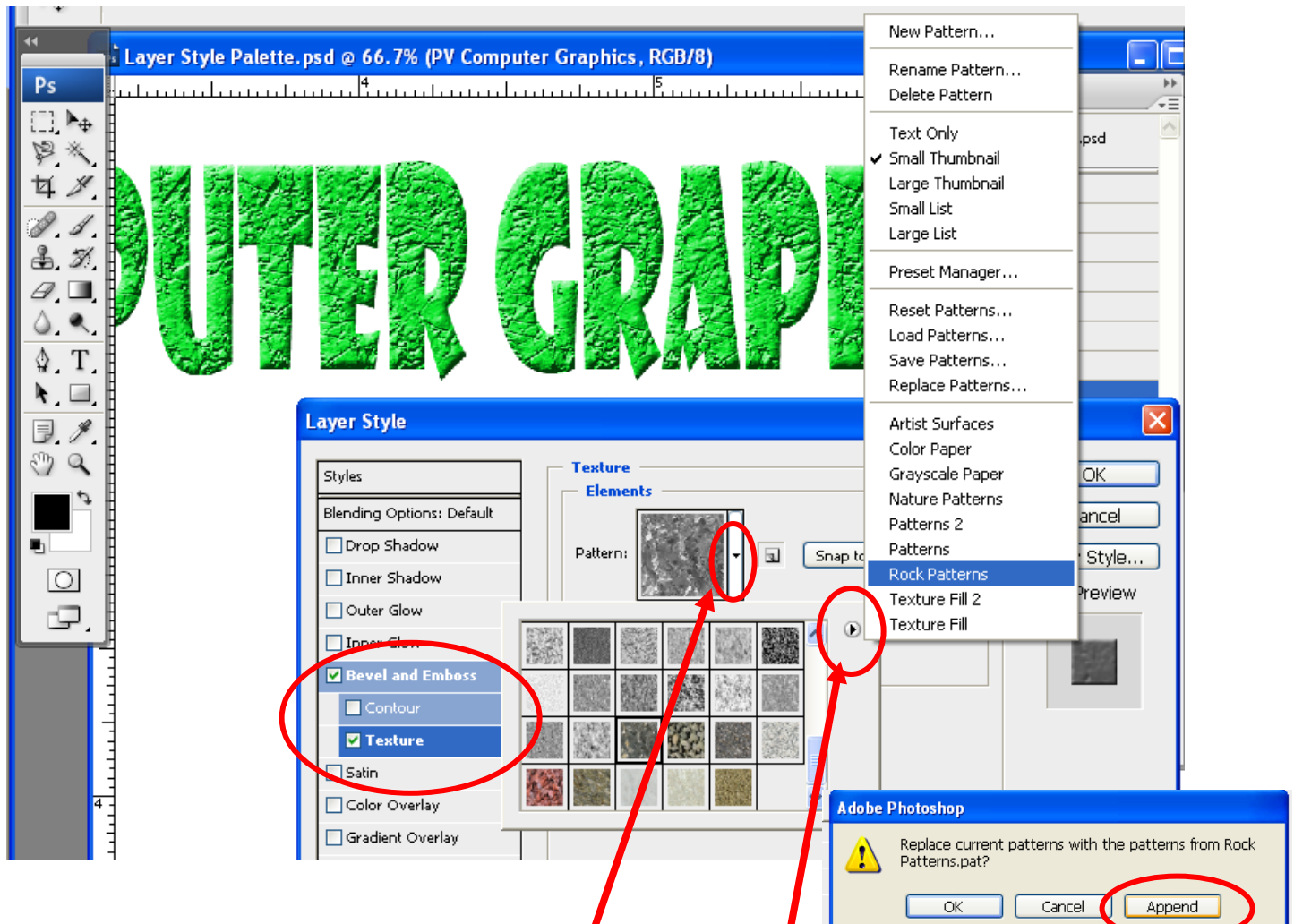
Outer Glow - Add a Gradient



Bevel and Emboss - Add Contour



Bevel and Emboss - Add Texture



Click here to access more patterns.

Click here to add more patterns from library. Click Append to add.

Gradient Overlay

OUTER GRAPHICS

Layer Style

Styles

Blending Options: Default

Drop Shadow

Inner Shadow

Outer Glow

Inner Glow

Bevel and Emboss

Contour

Texture

Satin

Color Overlay

Gradient Overlay

Pattern Overlay

Stroke

Gradient Overlay

Gradient

Blend Mode: Normal

Opacity: 100 %

Gradient:

Style: Linear Align with Layer

Angle: 90 °

Scale: 100 %

Gradient Editor

Presets

Name: Custom

Gradient Type: Solid

Smoothness: 100 %

Click to add a stop

Color:

Change the color by clicking on color squares. Add more by clicking underneath gradient bar with mouse.

Stroke

OUTER GRAPHICS

Layer Style

Styles

Blending Options: Default

Drop Shadow

Inner Shadow

Outer Glow

Inner Glow

Bevel and Emboss

Contour

Texture

Satin

Color Overlay

Gradient Overlay

Pattern Overlay

Stroke

Stroke

Structure

Size: 10 px

Position: Outside

Blend Mode: Normal

Opacity: 100 %

Fill Type: Color

Color:

Change the size and the color of your stroke.